

# 1x4 Vertical Gift Card Display

- Strong and durable design
- Includes 8 hooks (1.5" usable space)

Bracket mounting system  
**UpRight Slots Mounting**



Patents Pending





# 1x4 Angled Gift Card Display

- Strong and durable design
- Includes 8 hooks (1.5" usable space)





# 1x4 Vertical Gift Card Display

- Strong and durable design
- Includes 8 hooks (1.5" usable space)

Bracket mounting system  
**UpRight Slots Mounting**



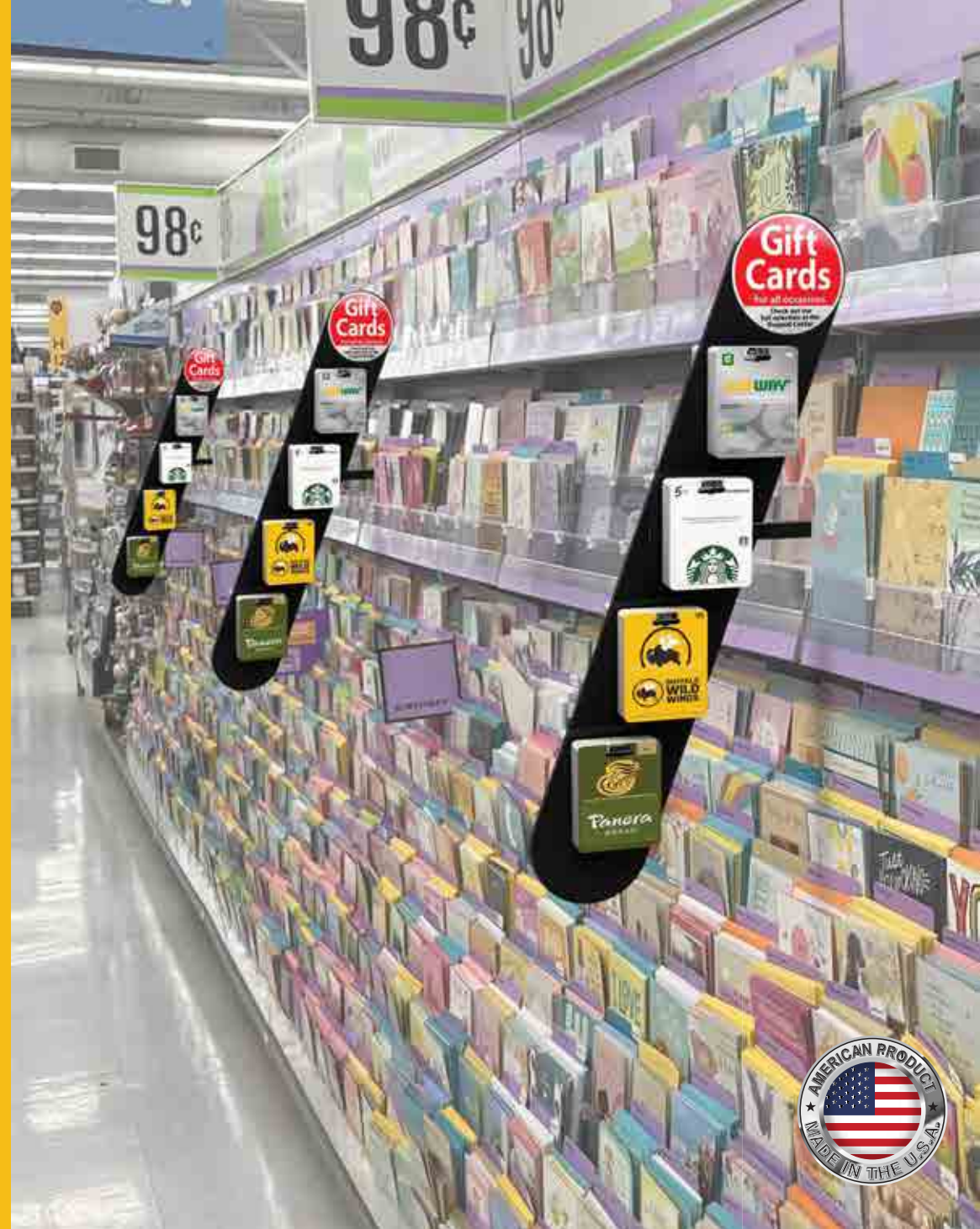
Patents Pending





# 1x4 Angled Gift Card Display

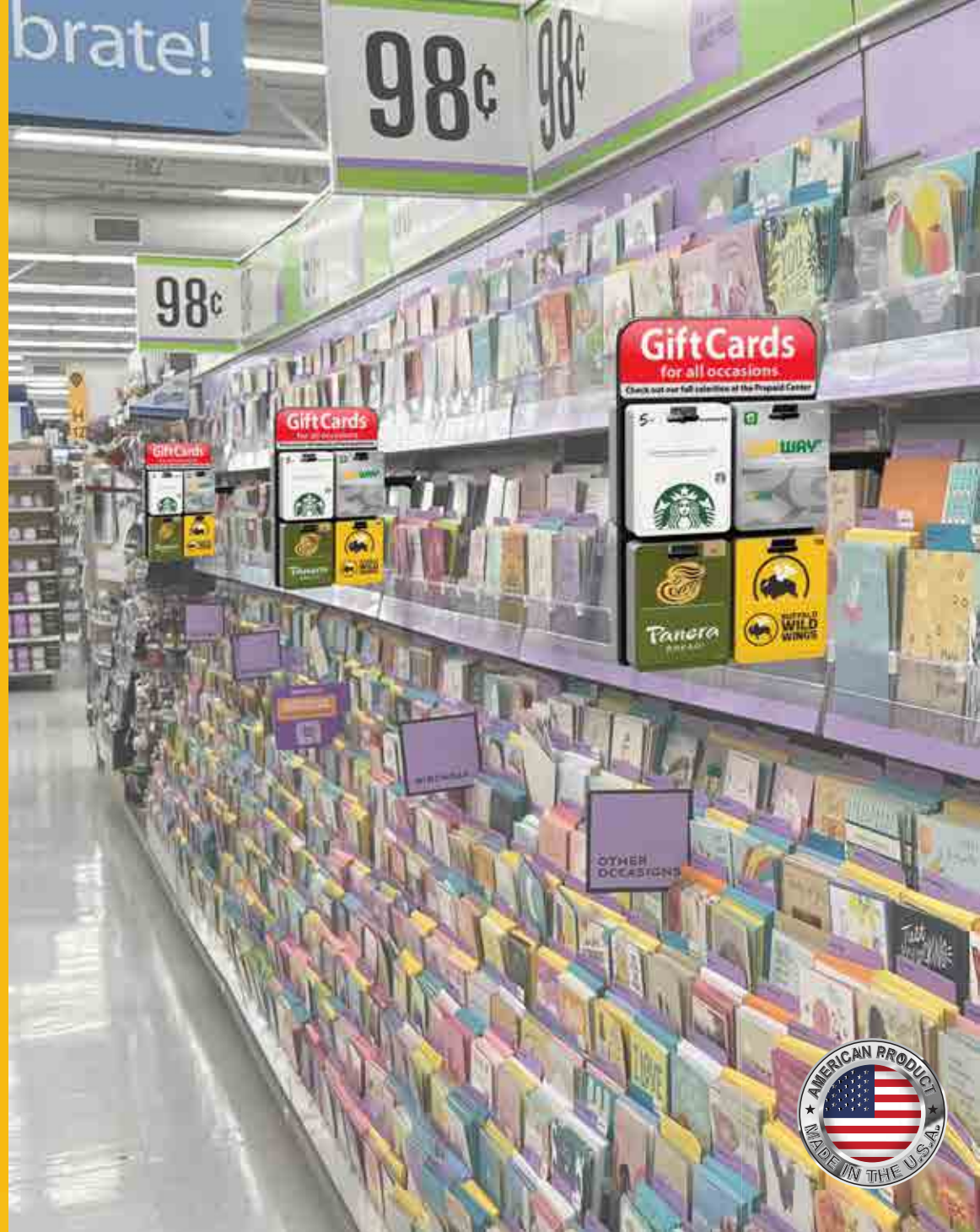
- Strong and durable design
- Includes 8 hooks (1.5" usable space)





- Strong and durable design
- Includes 8 hooks  
(1.5" usable space)

- Strong and durable design
- Includes 8 hooks  
(1.5" usable space)





# Gift Card Metal Panel

Available Signage Options: Magnetic, Clear Sign Sleeve, Sign Gripper, C Channels

- Strong and durable design
- 8 Hooks per panel: 1.5" Usable Space

Magnetic "Curved" Header Option



.030 Styrene Header Printed 2 Sided with "H" Grips



# New Gift Card Panel Design



- Mounting Arm is welded to Gift Card Panel (no hardware needed).
- Gift Card Panels can now come in a low-profile style to include an optional sign header.
- The detachable sign option allows for more versatility such as sign shapes or promotional and seasonal graphics.
- Header signs can be changed out quicker and easier on this low-profile design without disturbing the display or removing it from the upright.



1950 Austin Drive • Troy, Michigan 48083  
800-992-5233 • 248-589-3272 • Fax 248-589-1535  
Email: [hq@tmshea.com](mailto:hq@tmshea.com) • [www.tmshea.com](http://www.tmshea.com)



